

SEAT RAILS - INSPECTION/CHECK**1. General**

- A. This section has the inspections and checks necessary to keep the seat rails in a serviceable condition.

TASK 53-25-00-220**2. Seat Rails and Attachment Structure Detailed Inspection****A. General**

- (1) This task includes the Supplemental Inspection Document (SID) requirements necessary to do a detailed inspection of the seat rails.

B. Special Tools

- (1) None

C. Access

- (1) Remove the pilot and the copilot's seat. Refer to Chapter 25, Flight Compartment - Maintenance Practices.
- (2) Remove floorboard access panels 231AL, 231BL, 231CL, 231DL, 232BC, 212FR, 216BC, 232AR, 232BR, 232AC, 232CR, and 232DR. Refer to Chapter 6, Access Plates and Panels - Description and Operation.
- (3) Remove the passenger seats and floor covering. Refer to Chapter 25, Passenger Seats - Maintenance Practices.
- (4) Remove necessary floor panels adjacent to passenger seat rails to examine structure beneath the passenger seat rails for cracks. Refer to Chapter 6, Access Plates and Panels - Description and Operation.

D. Examine the Pilot and Copilot's Seat Rails and Attachment Structure.

- (1) Do a visual inspection of the pilot and copilot's seat rails for cracks or holes that are stretched more than 0.21 inch (5.33 mm).
- (a) If any of the seat rails have cracks or holes that are stretched more than 0.21 inch (5.33 mm), replace the seat rails. Refer to Service Kit SK208-138 and Seat Rails - Maintenance Practices.
- (b) If there are no cracks or holes that are stretched more than 0.21 inch (5.33 mm), continue with the inspection. Refer to Figure 601
- (2) Do a visual inspection of the structure beneath the pilot and copilot's seat rails for cracks.
- (a) If there are no cracks in the structure beneath the pilot or copilot's seat rails, restore access.
- (b) If the structure beneath the pilot and copilot's seats has cracks, repair the structure. Refer to Service Kit SK208-138 and the Model 208 Structural Repair Manual.

E. Examine the Passenger Seat Rails and Attachment Structure.

- (1) Do a visual inspection of the passenger seat rails for cracks.
- (a) If any of the seat rails have cracks, replace the seat rails. Refer to Seat Rails - Maintenance Practices.
- (b) If there are no cracks in the passenger seat rails, continue with the inspection.
- (2) Do a visual inspection of the structure under the passenger seat rails for cracks.
- (a) If the structure under the passenger seats has cracks, repair the structure. Refer to the Model 208 Structural Repair Manual.
- (b) If there are no cracks in the structure under the passenger seat rail restore access.

F. Restore Access

- (1) Install access panels 231AL, 231BL, 231CL, 231DL, 232BC, 212FR, 216BC, 232AR, 232BR, 232AC, 232CR, and 232DR. Refer to Chapter 6, Access Plates and Panels - Description and Operation.
- (2) Install the pilot and the copilot's seat. Refer to Chapter 25, Flight Compartment - Maintenance Practices.
- (3) Install floor panels adjacent to passenger seat rails that were removed. Refer to Chapter 6, Access Plates and Panels - Description and Operation.
- (4) Install the passenger seats and floor covering. Refer to Chapter 25, Passenger Seats - Maintenance Practices.

END OF TASK**TASK 53-25-00-221****3. Bulkheads and Stiffeners Below the Seat Rail Attachments at FS 143.00 and FS 158.00 Detailed Inspection****A. General**

- (1) This task includes the Supplemental Inspection Document (SID) requirements necessary to do a detailed inspection of the bulkheads and stiffeners below the seat rail attachments at FS 143.00 and FS 158.00.

B. Special Tools

- (1) None

C. Access

- (1) Remove the pilot and the copilot's seat. Refer to Chapter 25, Flight Compartment - Maintenance Practices.
- (2) Remove floorboard access panels 231CL, 231DL, 232BC, 251PL, 251AL, 252PR, 232CR, and 232DR. Refer to Chapter 6, Access Plates and Panels - Description and Operation.

D. Examine the Bulkheads and Stiffeners Below the Seat Rail Attachments.

- (1) Examine the bulkheads and stiffeners for cracks at FS 143.00 and FS 158.00.
 - (a) Do a visual inspection of the bulkheads and stiffeners for cracks.
 - (b) Do a visual inspection of the bulkhead structure near the lightening holes for cracks.
 - (c) Do a visual inspection of the bulkhead structure near the intersections with the longitudinal bulkheads for cracks.
- (2) Examine the longitudinal bulkheads and stiffeners for cracks at FS 143.00 and FS 158.00.
 - (a) Do a visual inspection of the longitudinal bulkheads and stiffeners for cracks.
 - (b) Do a visual inspection of the bulkhead structure near the lightening holes for cracks.
 - (c) Do a visual inspection of the bulkhead structure near the intersections with the longitudinal bulkheads for cracks.
- (3) If there are cracks in the bulkheads, replace the bulkheads. Refer to the Model 208 Structural Repair Manual.
- (4) If there are no cracks, restore access.

E. Restore Access

- (1) Install floorboard access panels 231CL, 231DL, 232BC, 251PL, 251AL, 252PR, 232CR, and 232DR. Refer to Chapter 6, Access Plates and Panels - Description and Operation.
- (2) Install the pilot and the copilot's seat. Refer to Chapter 25, Flight Compartment - Maintenance Practices.

END OF TASK

Figure 601 : Sheet 1 : Seat Rails

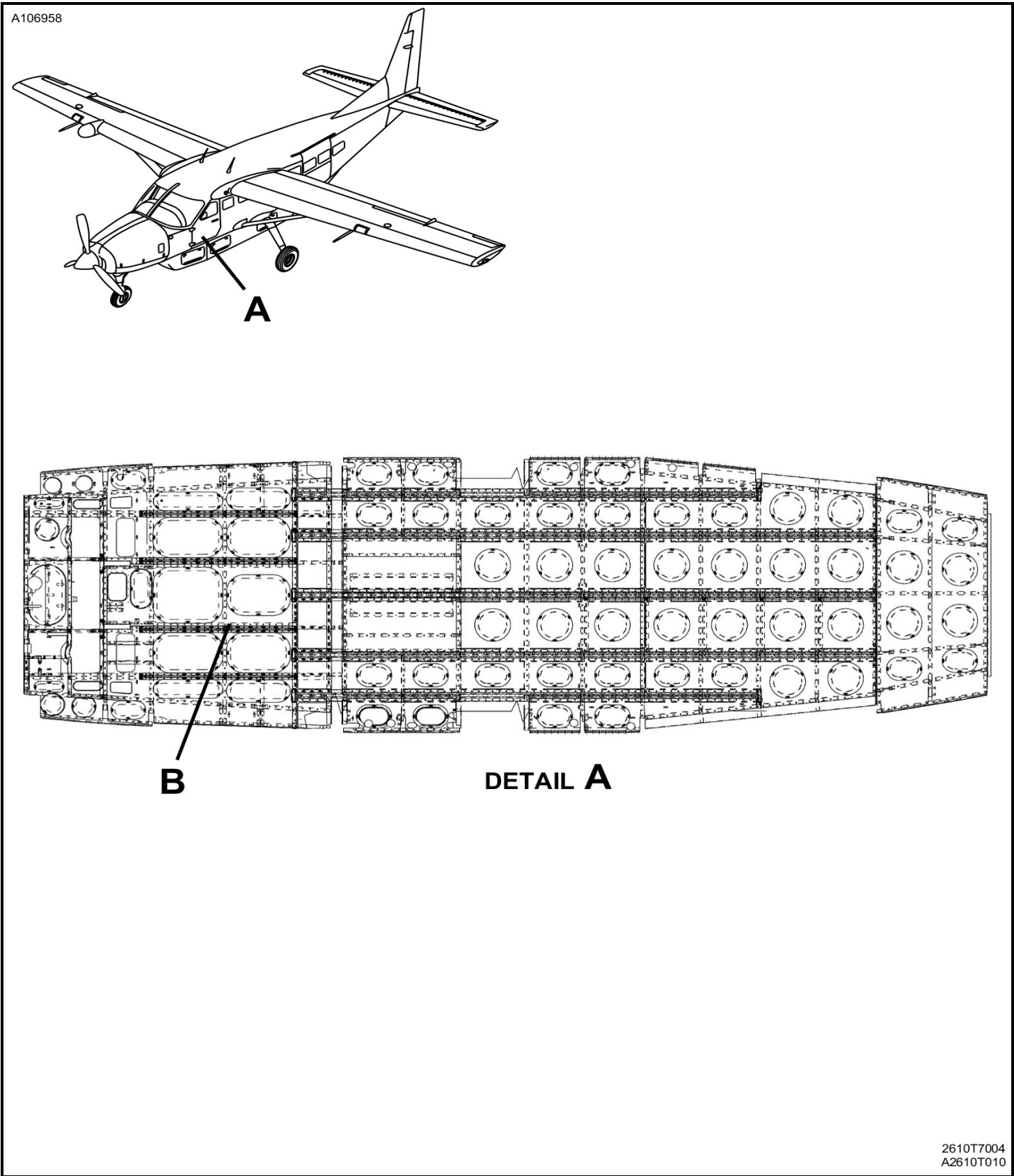
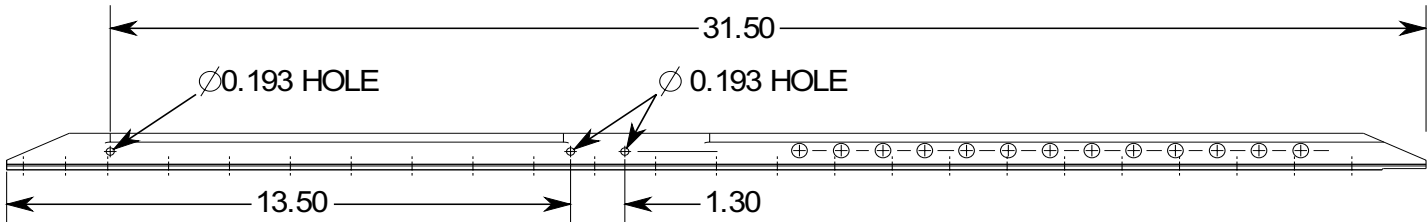
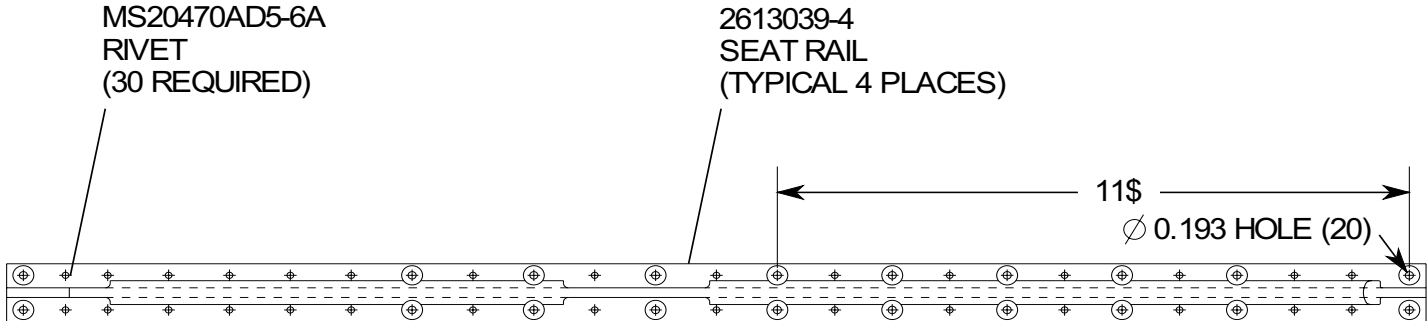


Figure 601 : Sheet 2 : Seat Rails

A106959

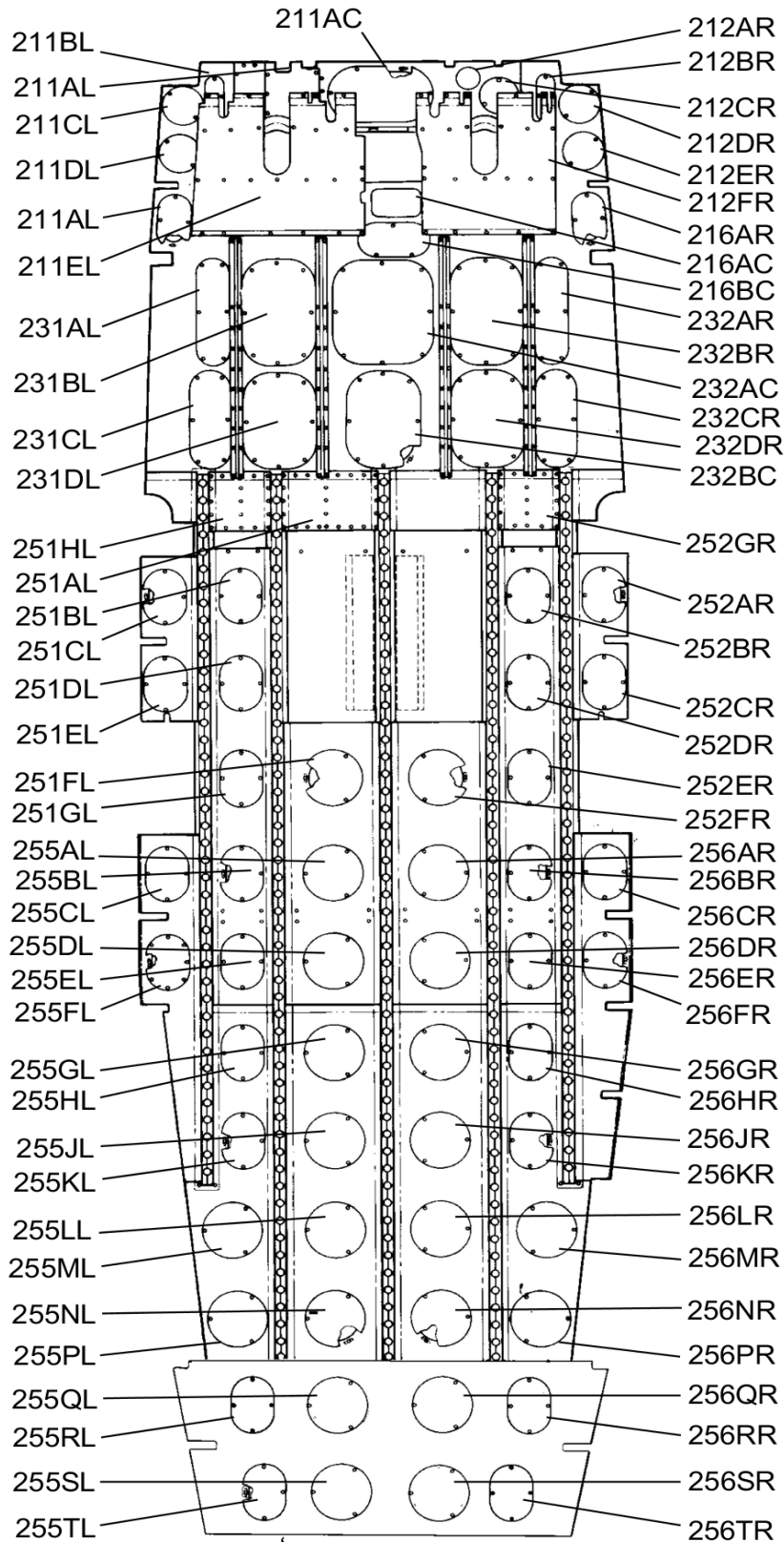


DETAIL B

B2613T039

Figure 2 : Sheet 1 : Model 208 Floorboard Access Plates/Panels Identification

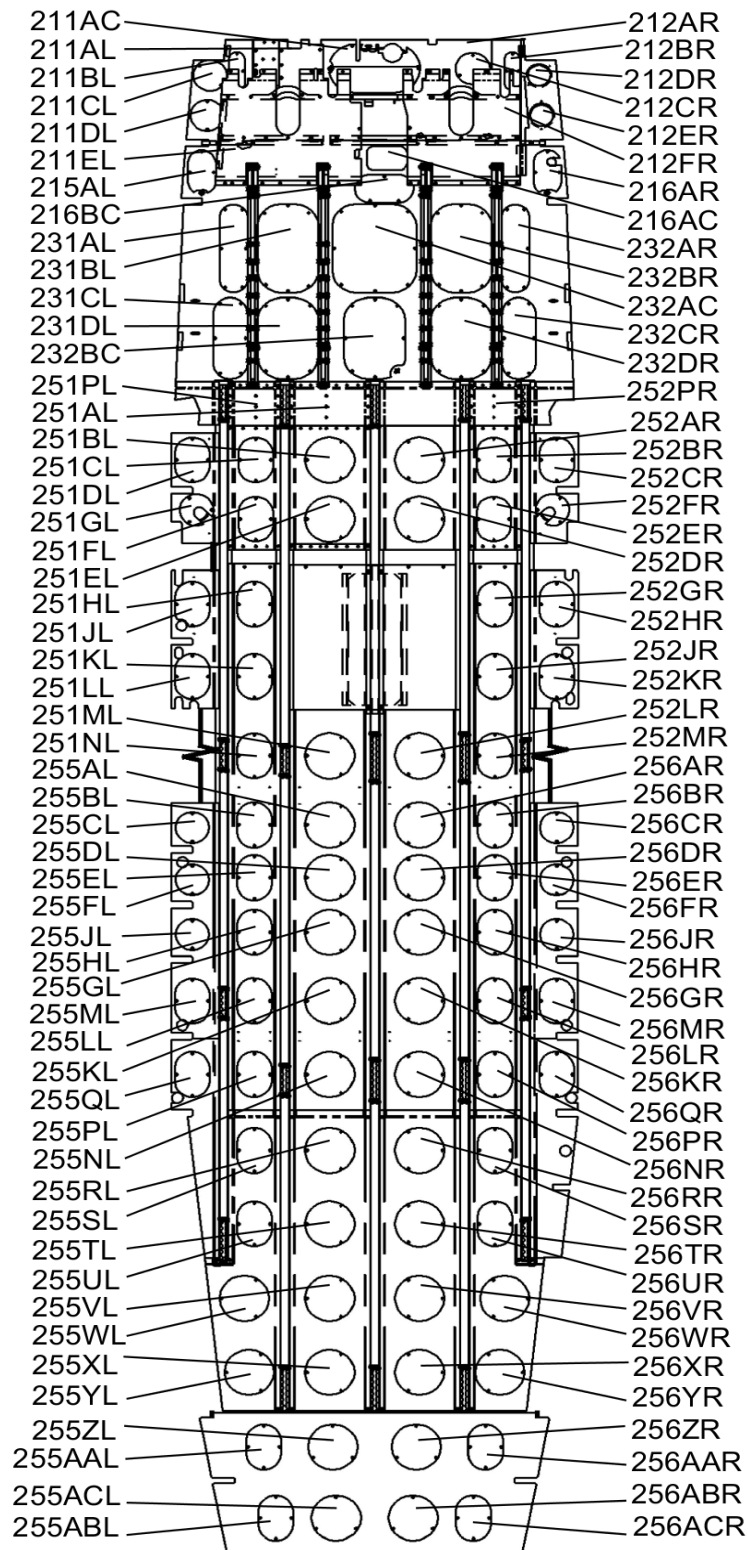
A22946



2611R4005
2611R3001

Figure 5 : Sheet 1 : Model 208B Passenger

A22953



MODEL 208B PASSENGER

2611R4003
2611R3008